



GLASSLINE

POINT FIXINGS

GLASS CLAMP



FOREWORD

Dear Sir or Madam,

GLASSLINE was created with two company founders and a good idea. This is because the supply of good point fixings for glass was quite straightforward at end of the nineties. Only two to three manufacturers existed throughout Europe that sold rather expensive products of inadequate quality. The founders thought, „We'll do it ourselves“. That was in 1998 – GLASSLINE was born.

The drawings were quickly created on the basis of customers' needs. After the first prototypes, the founders were in agreement and the factories were quickly found in Germany - the quality was now right. Development, production, patent registration and distribution therefore lay in the hands of GLASSLINE. And the success proved both founders right - the GLASSLINE point fixings in their various designs became a hit on the market.

Point fixings are therefore the basis of our company and in this brochure you will find many possible applications and wonderful references. Point fixings remain sought-after products to facilitate and create durable glass designs. With our point fixings, you can be sure that: no extra approvals are needed, very high quality standards are met, and reliable safety is offered. We use high-quality stainless steel and the point fixings are produced at our facility in Adelsheim by qualified specialists.

Any other requests? We look forward to your proposals! We listen to you.

With kind regards,

A handwritten signature in blue ink, which appears to read 'Thomas Utsch'.

Thomas Utsch
Managing Director



ADVANTAGES OF OUR POINT FIXINGS

- General Building Inspectorate (AbZ) approval
- General Design Certification (ABG)
- General Building Inspection Test Certificate (AbP)
- Structural type calculations
- Point-mounted glazing
to DIN 18008-3
- Additional requirements for fall-proof glazing
to DIN 18008-4
- Point fixings with safety ball joints

AbZ**ABG****AbP****DIN
18008-3****DIN
18008-4**



SPID

GLASS ROOF CONSTRUCTIONS

Page 6



EXTERIOR WALL CLADDINGS

Page 7





ER GLAZING

Page 11

GLASS CANOPIES

Page 10

POINT FIXINGS



RAILING SYSTEMS

Page 8



Our **POINT FIXINGS** planning manual and dimension tables can be found online:



OVERHEAD GLAZING

INDOORS AND OUTDOORS

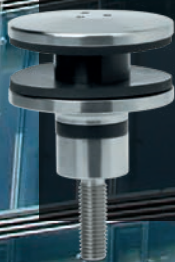


Large-scale glass roof constructions have become ubiquitous in contemporary architecture. The need for more light, energy considerations or the incorporation of nature have prevailed. Roof glazing is therefore ideal for passageways, bicycle shelters, roof elements and entrances for parking garages.

**AbZ****ABG****LGAI**
tested

FALL-PROOF GLAZING

INDOORS AND OUTDOORS



Ventilated facades are a high-performance solution for building envelopes in terms of mechanical anchoring elements, on which the highest standards are placed. The load on the design envelope of the building is safely transferred to the concrete or masonry by connecting the facade material with the substructure.

AbZ**AbP****LGAD
tested**

FALL-PROOF GLAZING

OUTDOORS

Design-oriented, functional and immediately applicable - point-fixed railing systems are elegant and equally intelligent balustrade solutions for public and private building projects, both indoors and outdoors. Wide spacing between supports and delicate fixing points ensure high transparency. Regardless of emphasizing features or recording and consequently continuing the building's architecture - the minimum amount of construction blends discreetly into any architectural structure.

**AbZ****AbP****LGAI
tested**

NON-FALL-PROOF GLAZING

INDOORS AND OUTDOORS



Add new accents to glass structures and thereby produce creative glass architecture. Ventilated exterior wall claddings, space-enclosing glazing, and room dividers or interior wall claddings serve both for the integration of historical structures in modern town and cityscapes and for elegant, light-flooded industrial or administrative buildings.

AbZ



LGA
tested

GLASSLINE

POINT FIXINGS

GLASS CANOPIES

OUTDOORS



Glass canopies protect entryways from rain, snow and wind and embellish any entrance. Maximum transparency and incomparable elegance are guaranteed with just a few fixing components - for a bright, light-flooded entryway or terrace area.



SPIDER GLAZING

INDOORS AND OUTDOORS



Turned spiders are an easy and modern solution for screwed glazing that are fastened to the support structure by means of point fixings. The high-quality stainless steel fixings are designed in such a way that they absorb and distribute over the support structure all static and dynamic loads, i.e. the weight of the glass itself, wind load, snow load and various expansions caused by temperature differences.





GLASSLINE GmbH

Industriestraße 7-8

74740 Adelsheim

Telephone: +49 (0) 6291 6259-0

Fax: +49 (0) 6291 6259-11

info@glassline.de

www.glassline.de

SYSTEM SOLUTIONS FOR SOPHISTICATED FRAMELESS
GLASS ARCHITECTURE AND SECURE ATTACHMENT OF
ADD-ON COMPONENTS TO ETICS

As a leading supplier, GLASSLINE develops, manufactures and sells high-quality system solutions in the areas of point fixing systems, all-glass railing systems, frameless canopy constructions and systems with thermal insulation for the secure attachment of add-on elements to building envelopes.

