

GLASSLINE

FIX'N SLIDE *outside*
SYSTEM WITH THERMAL BREAK FOR
SECURE ATTACHMENT OF ADD-ON ELEMENTS
ON BUILDING ENVELOPES



Dear Sir or Madam,

we at GLASSLINE always like to think outside the box. For this reason, today we would like to inform you about our latest invention:

FIX'N SLIDE

The new system ensures secure attachment of add-on elements to insulated building envelopes.

With just a few components and different insulation sizes, one can thermally and statically bridge every insulation thickness with an approved system.

From now into the future. Promised.

Best regards,

Thomas Utsch
Managing Director

FIX'N SLIDE

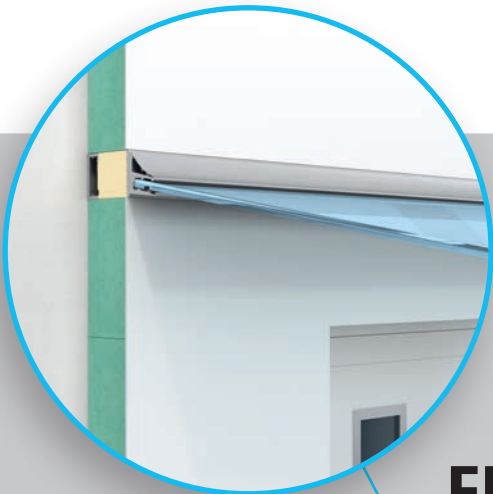
FIX'N SLIDE provides for secure fastening on insulated building envelopes for a wide variety of add-on elements such as awnings, glass canopies and parapets as well as components with a weight of several hundred kilograms.

Benefit from the advantages:

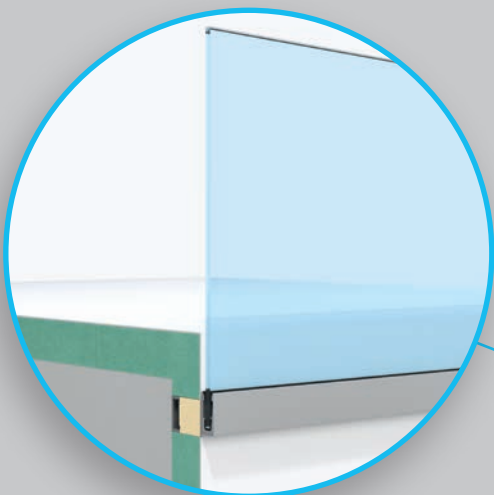
- ✓ Reduction of thermal bridges
- ✓ Secure attachment of add-on elements
- ✓ Thermal properties /
Energy planning according to EnEV 2016
- ✓ Safe load introduction
- ✓ Variable attachment methods
- ✓ Modular and flexible
- ✓ Application independent
Bridging the insulation system
- ✓ Safety in case of fire
- ✓ Flexible deployment – for new buildings
or retrofitting



CANOPIES



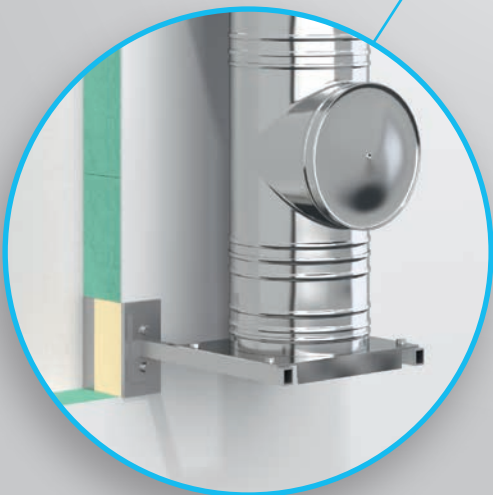
PARAPETS



FIX'N

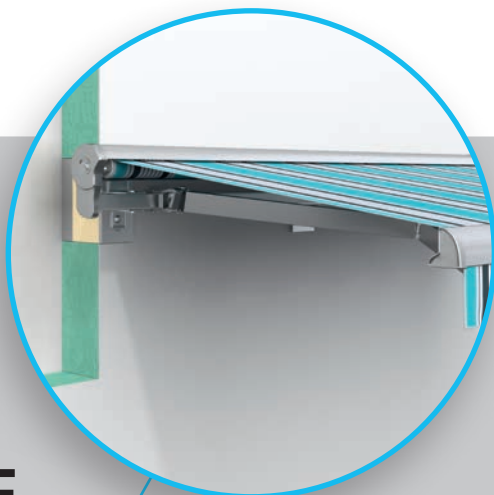


RESCUE LADDERS



FIREPLACES

AWNINGS



EXTERNAL BLINDS



PHOTOVOLTAIC
SYSTEMS



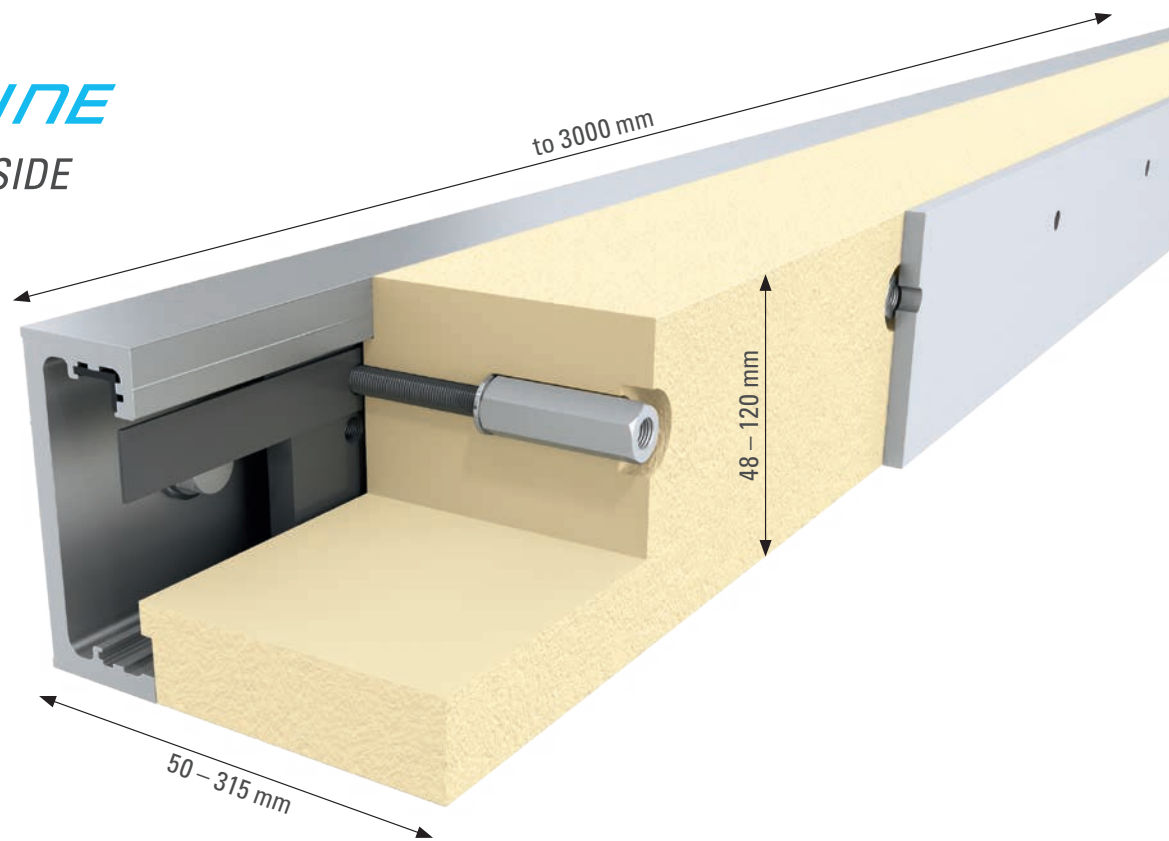
ADVERTISING SYSTEMS

SLIDE



GLASSLINE

FIX'N SLIDE *OUTSIDE*



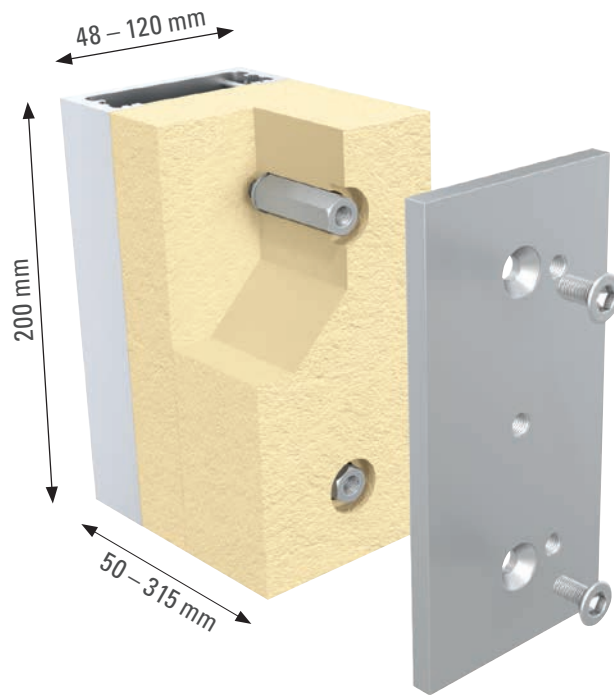
THE SYSTEM FOR LINEAR CONNECTION



ALL-GLASS CANOPY



ALL-GLASS RAILINGS



SYSTEM COMPONENT WITH ADAPTER PLATES FOR POINT-TO-POINT CONNECTION



FIREPLACE



AWNING

**Request your free-of-charge
Planning handbook:**

www.glassline.de/fixnslide/handbuch



GLASSLINE

GLASSLINE GmbH

Industriestraße 7-8
74740 Adelsheim, Germany
Telephone +49 (0) 6291 6259-0
Fax +49 (0) 6291 6259-11
info@glassline.de
www.glassline.de

SYSTEM SOLUTIONS FOR SOPHISTICATED FRAMELESS
GLASS ARCHITECTURE AND SECURE ATTACHMENT OF
ADD-ON COMPONENTS TO ETICS

As a leading supplier, GLASSLINE develops, manufactures and sells high-quality system solutions in the areas of point fixing systems, all-glass railing systems, frameless canopy constructions and systems with thermal insulation for the secure attachment of add-on elements to building envelopes.

Copyright 2017 by GLASSLINE GmbH · Edition January 2018 · Technical changes reserved

- All drawings are sample applications. GLASSLINE assumes no guarantee or liability for a transferable application.
- Technical and design changes are reserved.
- All screw connections are permanent, e.g. to be secured against loosening with an adhesive bond.
- The pressure-resistant insulating elements must be protected against UV radiation and weathering.
- The object-specific application and the proofs for load input and forwarding are to be tested and provided on site.

